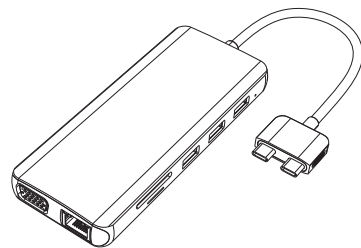




# Product Manual

## 12-in-1 Triple Display Multifunction USB-C Hub For MacBook & Mac mini



ENGLISH

Imported into the EU by EET Group A/S  
Tempovej 41, 2750 Ballerup, Denmark

ES623010

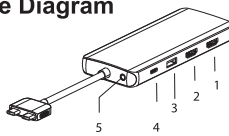
### Product Introduction

This All-in-One multifunction USB-C hub offers convenient access to multiple devices on your MacBook or Mac mini.

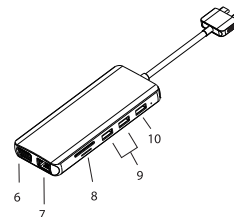
This hub is equipped with 3 video display outputs (2 x 4K HDMI & 1 x 1080P VGA). It allows you to split your content to 3 displays simultaneously if your software supports this function.

Simply plug and play to expand your MacBook's or Mac mini's capabilities.

### Structure Diagram



- HDMI 1 (4K60Hz)
- HDMI 2 (4K30Hz)
- USB-A 2.0
- USB-C PD 3.0
- Audio/Mic
- VGA
- RJ45
- SD & Micro SD
- USB-A 3.0
- USB-A 2.0



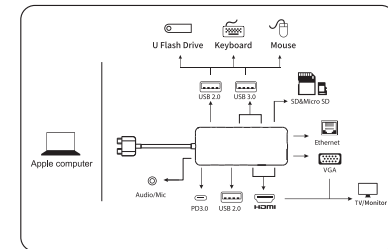
### Specifications/features

- HDMI 1: 4Kx2K 60Hz / 3840x2160
- HDMI 2: 4Kx2K 60Hz / 3840x2160 (if the source is DP1.4) 4Kx2K 30Hz / 3840x2160 (if the source is DP1.2)
- USB-C PD3.0 Power Delivery (Charging only) For charging the MacBook upstream. For safety charging is limited to 87-96W for safety. Firmware can affect the power. Supports 100W Power Adapter
- 3.5mm Audio/Microphone (CTIA Standard)
- 2 x USB-A 2.0 Data speed: Up to 480Mbps. Power output: 5V/0.5A/2.5W Designed for connection of 2.4GHz wireless devices such as wireless keyboard, mouse or adapters
- VGA Resolution up to 1080P 60Hz
- RJ45 Gigabit Ethernet Up to 10000 Mbps stable, wired Internet access
- SD / Micro SD Card Reader Read: 50-104MB/s, Write: 30-80MB/s Data transfer rates are subject to the speed of the memory card itself and your computers's USB Ports
- 2 x USB-A 3.0 Data speed: Up to 5GB/s data speed. Power output: 5V/0.9A/4.5W. USB-A 3.0is backwards compatible with USB2.0/USB1.1

### Remarks

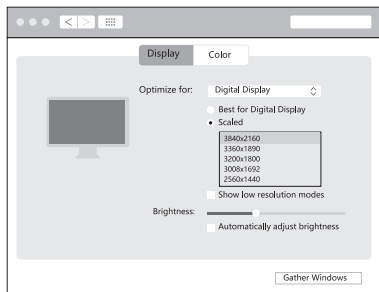
- This product supports MacBook's MST (Multi-Stream)
- HDMI 1 + HDMI2; HDMI 2 + VGA; HDMI 1 or HDMI 2 + VGA will allow Mac OS Multi-Stream display, i.e. it will allow to extend 2 different screens on 2 external displays

### Connections



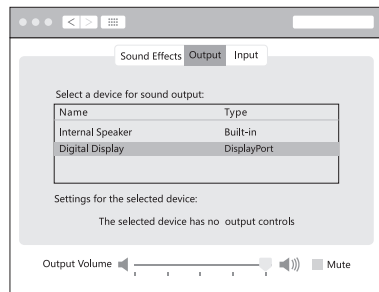
### Resolution Settings for Mac

Apple logo>System Preferences>Displays



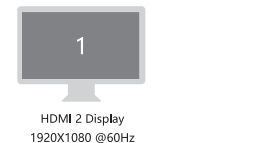
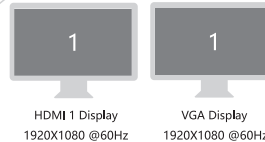
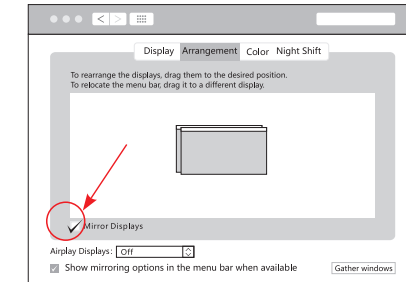
### Sound Setting for Mac

Apple logo>System Preferences >Sound



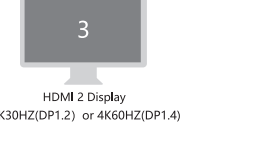
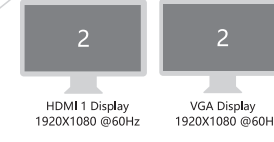
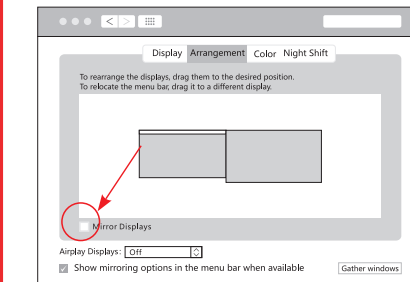
### Graphics Settings for Mac

Apple logo>System Preferences >Displays



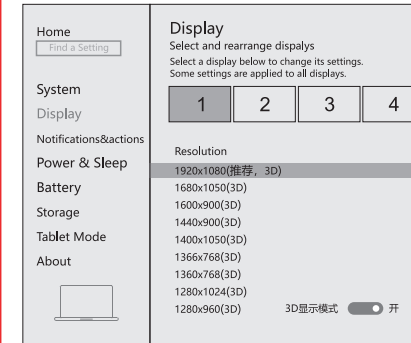
### 2. Extend Display

Apple logo>System Preferences >Displays

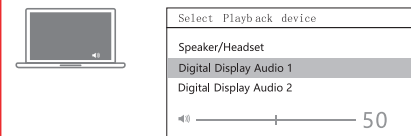


### Graphics Settings for Windows

Right click desktop >Display Settings

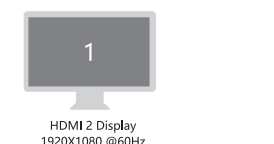
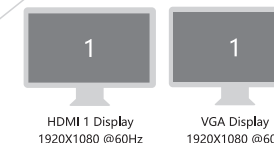
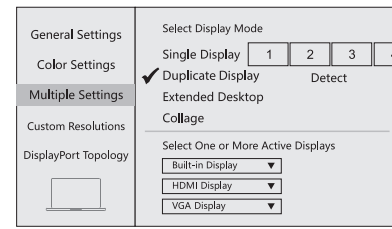


### Sound Settings for Windows 10



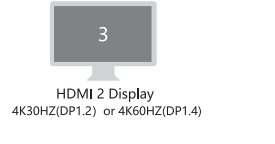
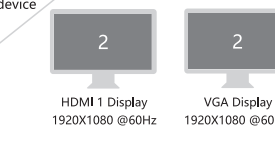
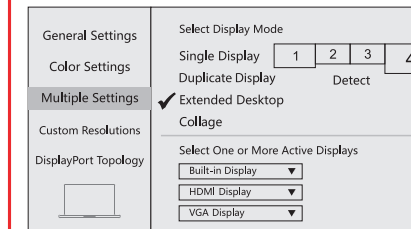
### 1. Duplicate Display

Right click desktop >Graphics Settings >Display



### 2. Extended Desktop

Right click desktop >Graphics Settings >Display



### Storage Conditions

Ambient Operating Temperature: 0 C to 70 C ( 32°F to 158°F)  
Storage Temperature: -30 C to 120 C ( -22°F to 248°F) Ambient  
Operating Humidity: 20%-80%RH  
Storage Humidity: 20%-90%RH

### FAQ

- A. Why is there no video output?
- Please make sure the USB-C port of your laptop/tablet supports video output
  - Please check if the cable is connected correctly
  - Please use standard HDMI cables. HDMI 2.0 or newer
- B. Why is there no audio output from HDMI?
- Please make sure your monitor supports audio output
  - Please set the external monitor as default audio output device
- C. What if the WIFI drops when the hard drive has been connected to the HUB?
- 2.4G is easily interfered, you should switch to a 5G network connection or move the hard drive to a suitable place.
- D. What should I do if the display screen drops after connecting a large current HDD/SSD?
- Please connect your MacBook power adapter to the USB-C PD charging port of this hub.
- E. What if the USB driver cannot be identified?
- Please restart your MacBook and reconnect the hub.



Made in China